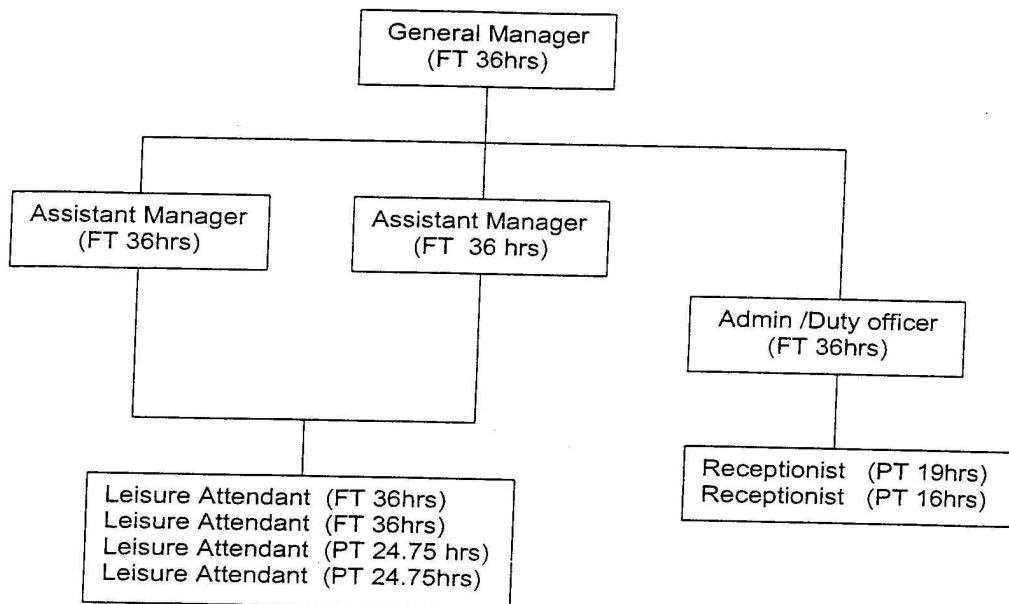


Waltham Abbey Sports Centre

Current Staff Structure



Plus Coaching Staff and casual staff to work as and when required

2002/03 Establishment

General Manager	1 x 36hrs = 36hrs
Assistant Managers	3 x 36hrs = 108hrs
Supervisor	1 x 36hrs = 36hrs
Leisure Attendants	3 x 36hrs = 108hrs
Receptionists	4 x 16hrs = <u>64hrs</u>
	352hrs

2006/07 Establishment

General Manager	1 x 36hrs = 36hrs
Assistant Managers	2 x 36hrs = 72hrs
Admin / DO	1 x 36hrs = 36hrs
Leisure Attendants	4 = 121.5hrs
Receptionists	2 = <u>35hrs</u>
	300.5hrs

Building Improvements

Since October 1977 when EFDC entered into a 30year dual use agreement, additional facilities have been added to the existing building with the construction of four squash courts, two of which were converted to a fitness studio, later to become air conditioned and a Licensed bar area.

Last year the Sports hall roof was replaced, Sports hall lighting was renewed and a new heating system was installed. New external signage was erected to improve the centres profile within the community.